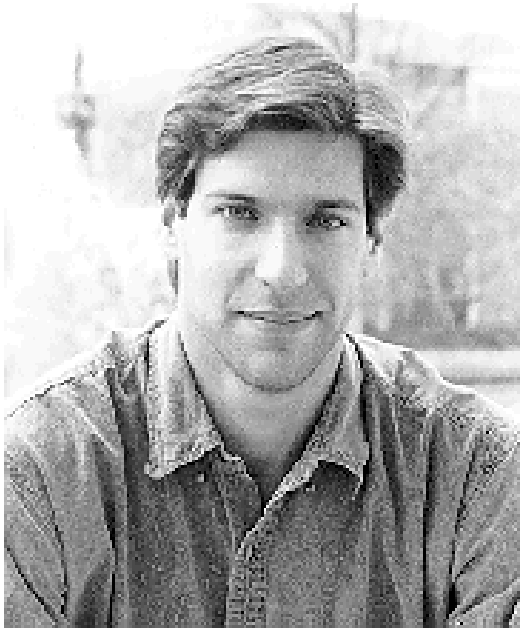


Daniel M. Kammen



Professor of Energy and Society (ERG)
Professor of Public Policy in the Goldman School
Professor of Nuclear Engineering
Director, Renewable and Appropriate Energy Laboratory
Energy and Resources Group (ERG)

Prior Academic Positions:

Assistant Professor of Public and International Affairs
Princeton University (1993 - 1999)
Lecturer, Harvard University (1992 - 1993)
Physics and Environmental Science
Wiezmann Postdoctoral Fellow, California Institute of
Technology (1988 - 1991)

Education:

Ph.D (1998) & MA (1986)
Harvard University (Physics)

AB (1984) Cornell University
(Physics)

Contact Information:

310 Barrows Hall
University of California
Berkeley, CA 94720-3050

Tel: 510.642.1139
Fax: 510.642.1085